



Overlook Parkway Water Main Extension Project
Solicitation Number: CO-00415-SM
Job No.: 20-7003

ADDENDUM 1
September 2, 2021

To Bidder of Record:

This addendum, applicable to work referenced above, is an amendment to the bid proposal, plans and specifications and as such will be a part of and included in the Contract Documents. Acknowledge receipt of this addendum by entering the Addendum number and issue date on the space provided in submitted copies of the bid proposal.

RESPONSES TO QUESTIONS

- 1. Question** Per the engineers bid proposal the 24” Ductile Iron pipe is to be 250 psi and on the plans under “Contractor Notes it also states 250 psi for the 24” & 16”. Under SAWS material specs 24” Ductile Iron pipe is to be 200 psi. Which one is correct? 250 psi or 200 psi

Response Class 250 Ductile Iron pipe shall be used for this project as shown on the plans.

- 2. Question** Will “Zinc” coating be required on the ductile iron pipe for additional corrosion protection?

Response A Zinc coating will not be required on the ductile iron pipe

CHANGES TO THE SPECIFICATIONS

1. BID Proposal

Delete the Bid Proposal in its entirety and replace with the attached Bid Proposal. Respondents shall use the revised Bid Proposal when submitting a bid for this project.

- Revised quantity of **Item ID 8; Item No. 413; Flowable Fill** to be 2,093 CY
- Revised quantity of **Item ID 37; Item No. 836.0; Pipe fittings, All Sizes and Types** to be 9.82 Ton

CHANGES TO THE PLANS

- 1. Sheet C1.02: Overall Quantity Sheet – Revise the following quantities**
 - Revise quantity of Item 413 - Flowable Fill to be 2,093 CY
 - Revise quantity of Item 836.0 - Pipe fittings, All Sizes and Types to be 9.82 Ton
- 2. Sheet C3.00: 24” Plan and Profile Sheet STA 10+00 to STA 13+00 – Revise the following quantities.**
 - Revise quantity of Item 413 - Flowable Fill to be 183 CY
 - Revise quantity of Item 836.0 - Pipe fittings, All Sizes and Types to be 0.48 Ton
- 3. Sheet C3.01: 24” Plan and Profile Sheet STA 13+00 to STA 17+00– Revise the following quantities.**
 - Revise quantity of Item 413 - Flowable Fill to be 228 CY
 - Revise quantity of Item 836.0 - Pipe fittings, All Sizes and Types to be 1.33 Ton
- 4. Sheet C3.02: 24” Plan and Profile Sheet STA 17+00 to STA 21+00 – Revise the following quantities.**
 - Revise quantity of Item 413 - Flowable Fill to be 267 CY
 - Revise quantity of Item 836.0 - Pipe fittings, All Sizes and Types to be 1.40 Ton

5. Sheet C3.03: 24" Plan and Profile Sheet STA 21+00 to STA 25+00 – Revise the following quantities.
 - o Revise quantity of Item 413 - Flowable Fill to be 251 CY
 - o Revise quantity of Item 836.0 - Pipe fittings, All Sizes and Types to be 1.72 Ton
6. Sheet C3.04: 24" Plan and Profile Sheet STA 25+00 to STA 29+00 – Revise the following quantities.
 - o Revise quantity of Item 413 - Flowable Fill to be 242 CY
7. Sheet C3.05: 24" Plan and Profile Sheet STA 29+00 to STA 33+00 – Revise the following quantities.
 - o Revise quantity of Item 413 - Flowable Fill to be 385 CY
 - o Revise quantity of Item 836.0 - Pipe fittings, All Sizes and Types to be 1.15 Ton
8. Sheet C3.06: 24" Plan and Profile Sheet STA 33+00 to STA 37+00 – Revise the following quantities.
 - o Revise quantity of Item 413 - Flowable Fill to be 243 CY
 - o Revise quantity of Item 836.0 - Pipe fittings, All Sizes and Types to be 1.44 Ton
9. Sheet C3.07: 24" Plan and Profile Sheet STA 37+00 to STA 40+70.77- Replace sheet in its entirety.
 - o Revised Profile of existing 24" Water main
 - o Revised quantity of Item 413 - Flowable Fill
 - o Revised quantity of Item 836.0 – Pipe Fittings, All Sizes and Types
10. Sheet C3.11: Plan Sheet STA 14+00 to 16+75.18 - Replace sheet in its entirety.
 - o Revised call out size of existing storm drain

CLARIFICATIONS

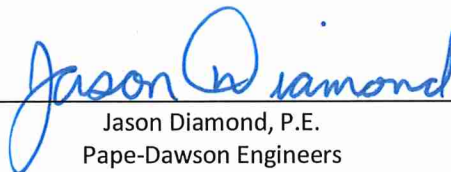
1. The revised Estimated Construction Cost based on modification outlined on Addendum 1 is \$3,889,569.45

END OF ADDENDUM

This Addendum, including these two (2) pages, is eight (8) pages with attachments in its entirety.

Attachments:

1. Contract Documents – Bid Proposal (4 pages)
2. Plan Sheet C3.07: 24" Plan and Profile Sheet STA 37+00 to STA 40+70.77 (1 Page)
3. Plan Sheet C3.11: Plan Sheet STA 14+00 to 16+75.18 (1 Page)


Jason Diamond, P.E.
Pape-Dawson Engineers



9-2-21

BID PROPOSAL

PROPOSAL OF _____, a corporation
a partnership consisting of _____
an individual doing business as _____

THE SAN ANTONIO WATER SYSTEM:

Pursuant to Instructions and Invitation to Bidders, the undersigned proposes to furnish all labor and materials as specified and perform the work required for the project as specified, in accordance with the Plans and Specifications for the following prices in the bid proposal to wit:

PLEASE SEE ATTACHED LIST OF BID ITEMS.

BIDDER'S SIGNATURE & TITLE

FIRM'S NAME (TYPE OR PRINT)

FIRM'S ADDRESS

FIRM'S PHONE NO. /FAX NO.

FIRM'S EMAIL ADDRESS

The Contractor herein acknowledges receipt of the following:
Addendum Nos. _____

OWNER RESERVES THE RIGHT TO ACCEPT THE OVERALL MOST RESPONSIBLE BID.

The bidder offers to construct the Project in accordance with the Contract Documents for the contract price, and to complete the Project within **330** calendar days after the start date, as set forth in the Authorization to Proceed. **The bidder understands and accepts the provisions of the contract Documents relating to liquidated damages of the project if not completed on time.**

Complete the additional requirements of the Bid Proposal which are included on the following pages.

Statement on President's Executive Orders

Has your firm previously performed work subject to the President's Executive Orders Numbers 11246 and 11375 or any preceding similar executive orders (Numbers 10925 and 11114)?

Yes No

BID PROPOSAL

ITEM ID	ITEM No.	Description	Unit	Quantity	Unit Price	Total Price
1	103.1	Remove Concrete Curb	LF	2,640	\$	\$
2	103.3	Remove Concrete Sidewalks and Driveways	SF	9,617	\$	\$
3	103.4	Remove Miscellaneous Concrete	SF	378	\$	\$
4	203.1	Tack Coat	GAL	673	\$	\$
5	205.2	Hot Mix Asphaltic Pavement - Type B (10" Pavement Thickness)	SY	1,798	\$	\$
6	205.4	Hot Mix Asphaltic Pavement - Type D (2" Pavement Thickness)	SY	6,679	\$	\$
7	208.1	Milling of Asphaltic Concrete Pavement (Salvaging, Hauling, and Stockpiling Reclaimable Asphaltic Pavement) (2" Pavement Thickness)	SY	6,679	\$	\$
8	413	Flowable Fill	CY	2,093	\$	\$
9	500.1	Concrete Curb	LF	2,640	\$	\$
10	502.1	Concrete Sidewalk	SY	998	\$	\$
11	503.1	Concrete Driveway	SY	74	\$	\$
12	505.1	Concrete Rip-rap	SY	42	\$	\$
13	507.6	Remove and Replace Residential Wooden Privacy Fence (6 Ft. High)	LF	30	\$	\$
14	520	Revegetation	LS	1	\$	\$
15	530	Barricade, Signs and Traffic Handling	LS	1	\$	\$
16	DMS-4200	Pavement Markers (Reflectorized)	EA	100	\$	\$
17	DMS-8220	Hot Applied Thermoplastic Pavement Markings 4" White Lane Line	LF	1,194	\$	\$
18	DMS-8220	Hot Applied Thermoplastic Pavement Markings Word "ONLY"	EA	3	\$	\$
19	DMS-8220	Hot Applied Thermoplastic Pavement Markings Right Arrow	EA	3	\$	\$
20	PM(4)-20	Crosswalk Pavement Markings (Complete) (Little Brook & US 281)	LS	1	\$	\$
21	540	SWPPP	LS	1	\$	\$
22	550	Trench Excavation Protection	LF	3,813	\$	\$
23	801	Tree Preservation Plan	LS	1	\$	\$
24	814	24" D.I. Pipe (Pipe Class 250)	LF	3,065	\$	\$
25	814	16" D.I. Pipe (Pipe Class 250)	LF	677	\$	\$
26	814	12" D.I. Pipe (Pipe Class 250)	LF	40	\$	\$
27	814	8" D.I. Pipe (Pipe Class 250)	LF	31	\$	\$

28	828	8" Gate Valve, M.J.	EA	1	\$	\$
29	828	12" Gate Valve, M.J.	EA	2	\$	\$
30	828	16" Gate Valve, M.J.	EA	4	\$	\$
31	828	6" Valve Box, Complete	EA	14	\$	\$
32	830	24" Butterfly Valve, Flg.	EA	7	\$	\$
33	831	24" Cut-in Tee	EA	1	\$	\$
34	831	16" Cut-in Tee	EA	1	\$	\$
35	832	24"x16" Tapping Sleeve	EA	1	\$	\$
36	834	Std. Fire Hydrant Assembly	EA	5	\$	\$
37	836	Pipe Fittings, All Sizes and Types (Compact)	Ton	9.82	\$	\$
38	840	8" Water Tie-in	EA	2	\$	\$
39	840	12" Water Tie-in	EA	3	\$	\$
40	840	16" Water Tie-in	EA	3	\$	\$
41	841	Hydrostatic Testing	EA	6	\$	\$
42	844	2" Temporary Blow-Off Assembly	EA	6	\$	\$
43	844	4" Temporary Blow-Off Assembly	EA	1	\$	\$
44	846	2" Combination Air Release Valve Assembly	EA	2	\$	\$
45	856.2	16" Carrier Pipe (Open Cut)	LF	20	\$	\$
46	856.3	Casing or Liner 30"	LF	20	\$	\$
47	3100	12" Temporary Water Line, Including Fittings, Tie-Ins, and All Appurtenances	LF	813	\$	\$
48	SC-4	Backyard Landscaping Repair	LS	1	\$	\$
49	SC-5	CPS Pole Brace/Guide Wire Relocation (per pole)	ALW	1	\$15,000.00	\$15,000.00
50	SS 4/5A	Subsurface Sensitive Feature Protection (2,500 psi)	CY	100	\$	\$
51	SS 4/5B	Subsurface Sensitive Feature Protection (Structural)	LF	15	\$	\$
52	SS 862	Abandon Existing Water Main (> 12-inch Diameter)	LF	1,870	\$	\$
SUBTOTAL (ITEMS 1-52)					\$	
GRAND TOTAL CONSTRUCTION COST (ITEM 1 TO 52)					\$	

ITEM ID	ITEM No.	Description	Unit	Quantity	Unit Price	Total Price
53	100	MOBILIZATION AND DEMOBILIZATION (MAX 10% OF LINE ITEMS 1-52)	LS	1	\$	\$
54	101	PREPARATION OF ROW (MAX 5% OF LINE ITEMS 1-52)	LS	1	\$	\$
55	102	INTERMEDIATE DEMOBILIZATION AND REMOBILIZATION (OPEN-CUT)	EA	1	\$	\$

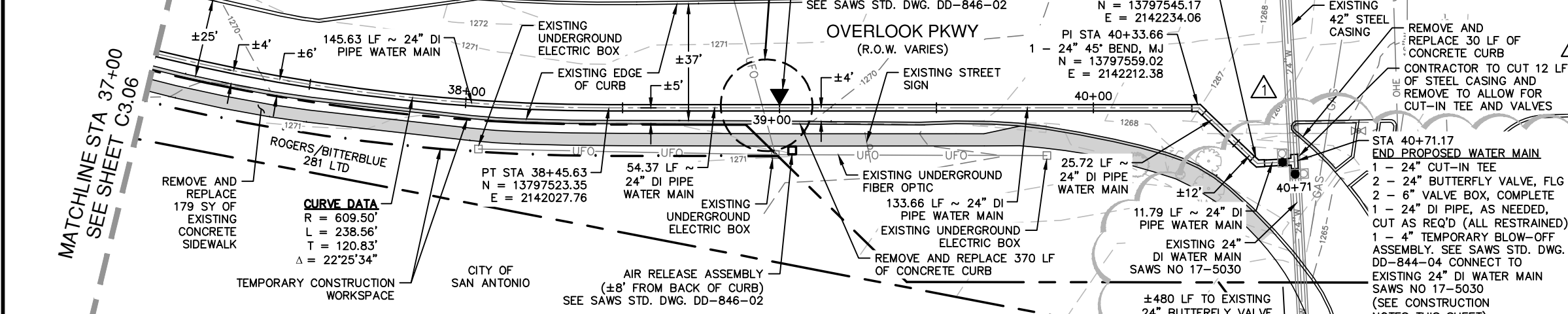
Mobilization and Prep of ROW shall be limited to the maximum percentage shown. **If the percentage exceeds the allowable maximum stated for mobilization and or preparation of ROW, SAWS reserves the right to cap the amount at the percentages shown and adjust the extensions of the bid items accordingly.**

TOTAL BID PRICE (TO INCLUDE LINE ITEMS 1 - 55)	\$
--------------------------------------------------------------------	----

TRENCH EXCAVATION SAFETY PROTECTION

CONTRACTOR AND/OR CONTRACTOR'S INDEPENDENTLY RETAINED EMPLOYEE OR STRUCTURAL DESIGN/GEOTECHNICAL/ SAFETY/EQUIPMENT CONSULTANT, IF ANY, SHALL REVIEW THESE PLANS AND ANY AVAILABLE GEOTECHNICAL INFORMATION AND THE ANTICIPATED INSTALLATION SITES WITHIN THE PROJECT WORK AREA IN ORDER TO IMPLEMENT CONTRACTOR'S TRENCH EXCAVATION SAFETY PROTECTION SYSTEMS, PROGRAMS AND/OR PROCEDURES FOR THE PROJECT DESCRIBED IN THE CONTRACT DOCUMENTS. THE CONTRACTOR'S IMPLEMENTATION OF THESE SYSTEMS, PROGRAMS AND/OR PROCEDURES SHALL PROVIDE FOR ADEQUATE TRENCH EXCAVATION SAFETY PROTECTION THAT COMPLIES WITH, AT A MINIMUM, OSHA STANDARDS FOR TRENCH EXCAVATIONS. SPECIFICALLY, CONTRACTOR AND/OR CONTRACTOR'S INDEPENDENTLY RETAINED EMPLOYEE OR SAFETY CONSULTANT SHALL IMPLEMENT A TRENCH SAFETY PROGRAM IN ACCORDANCE WITH OSHA STANDARDS GOVERNING THE PRESENCE AND ACTIVITIES OF INDIVIDUALS WORKING IN AND AROUND TRENCH EXCAVATION.

CAUTION!!!
EXISTING UNDERGROUND UTILITY CROSSING.
CONTRACTOR SHALL FIELD VERIFY LOCATION PRIOR TO EXCAVATION



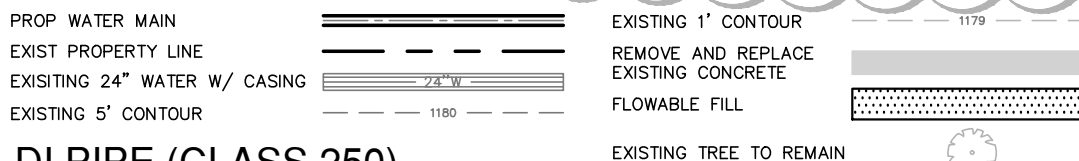
QUANTITY TABLE

ITEM	DESCRIPTION	UNIT	QUANTITY
103.1	REMOVE CONCRETE CURB	LF	400
103.3	REMOVE CONCRETE SIDEWALKS AND DRIVEWAY	SF	1,611
413	FLOWABLE FILL	CY	294
500.1	CONCRETE CURB	LF	400
502.1	CONCRETE SIDEWALK	SY	179
550.0	TRENCH EXCAVATION PROTECTION	LF	372
814.0	24-INCH D.I. PIPE (CLASS 250)	LF	372
830.0	24" BUTTERFLY VALVE, FLG.	EA	2
830.0	6" VALVE BOX, COMPLETE	EA	2
831.0	24" CUT-IN TEE	EA	1
836.0	PIPE FITTINGS, ALL SIZES AND TYPES	TON	0.88
844.0	4" TEMPORARY BLOW-OFF ASSEMBLY	EA	1
846.0	2" COMBINATION A.R.V. ASSEMBLY	EA	1

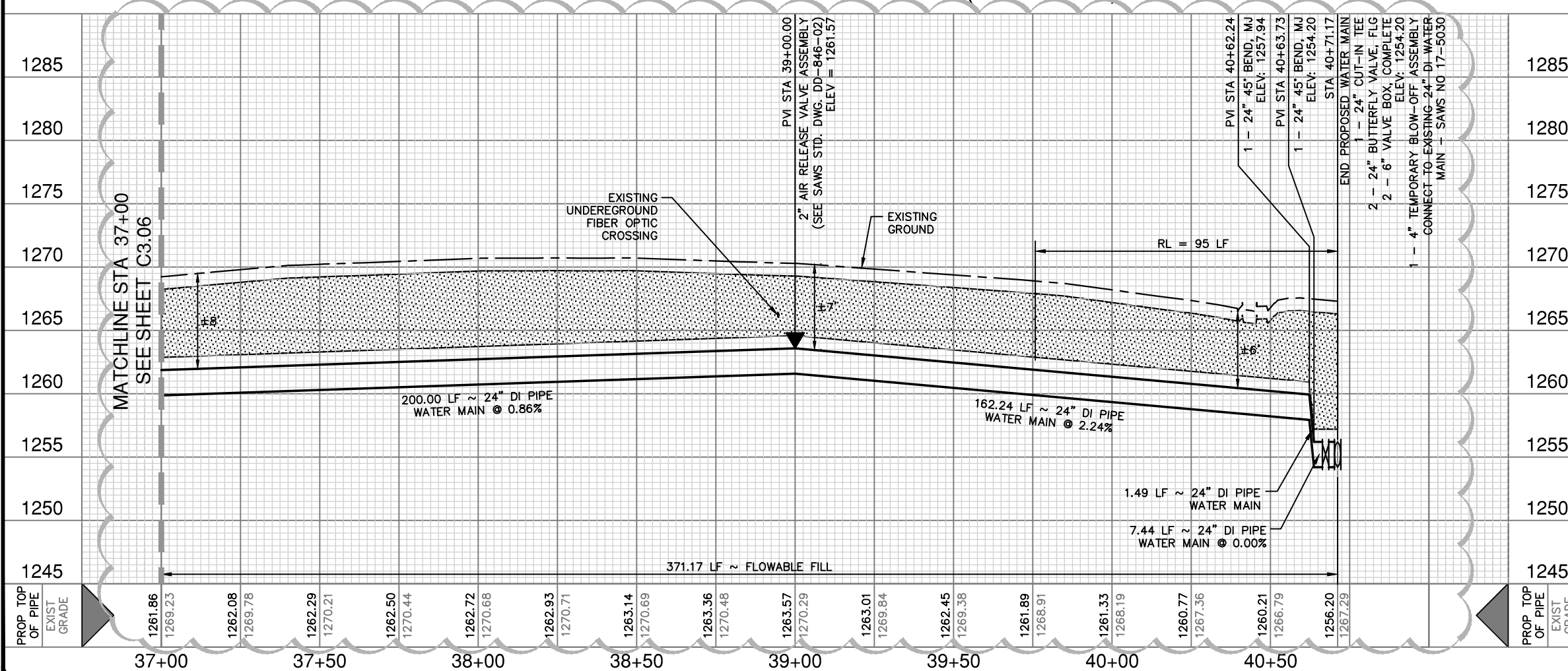
CONSTRUCTION NOTES

- MACHINE CHLORINATION:
"INSTALL FOR CHLORINATION"
2 - 1" CORP. STOP, CC x IP
2 - 1 1/4" SOLID CAPS, THR.
2 - 1" COPPER TUBING, CUT AS REQ'D
2 - 1" COMP. x 1 1/4" COUPLING, CURB STOP
(SEE SAWS STD. DWG. DD-847-01)
- TIE-IN AFTER RELEASE FOR SERVICE:
"AFTER RELEASE FOR SERVICE"
TIE NEW 24" DI MAIN TO EXISTING 24" DI MAIN
24" CAST (OR TRANSITION) COUPLING
- CONTRACTOR SHALL FIELD LOCATE AND VERIFY THE DEPTH OF THE EXISTING 24" MAIN AND FITTINGS PRIOR TO COMMENCING CONSTRUCTION & NOTIFY ENGINEER OF ANY DISCREPANCIES.
- CONTRACTOR WILL CUT-THROUGH CASING FOR EXISTING 24" WATER MAIN CONNECTION.

LEGEND



24" WATER MAIN - DI PIPE (CLASS 250)



SCALE: 1" = 40'



HORZ SCALE = 1" = 40'
VERT SCALE = 1" = 10'



Jason T. Diamond
8-17-21



SAN ANTONIO | AUSTIN | HOUSTON | FORT WORTH | DALLAS
2000 NW LOOP 410 | SAN ANTONIO, TX 78213 | 210.375.9000
TBPE FIRM REGISTRATION #470 | TBPLS FIRM REGISTRATION #10028800

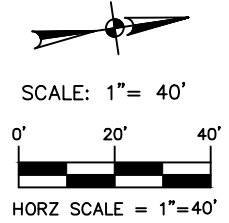
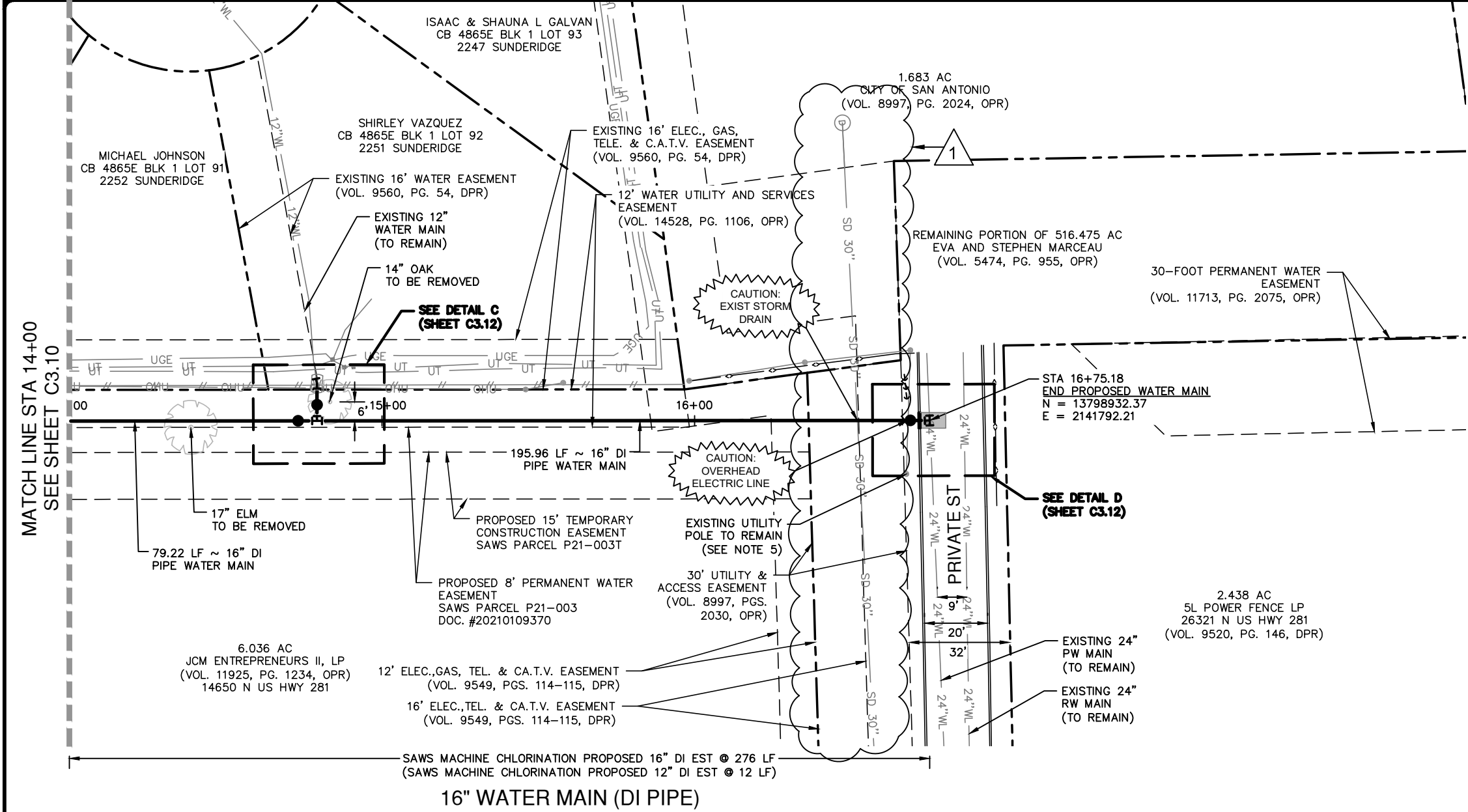
NO.	REVISION	DRAWN	APPROVED	DATE
1	ADDENDUM NO. 1	BS	JD	08.17.21

REVISIONS

**OVERLOOK PARKWAY
WATER MAIN EXTENSION**

24" PLAN AND PROFILE SHEET
STA 37+00 TO STA 40+70.77

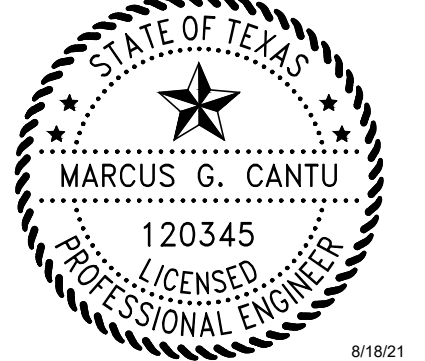
DEVELOPER: SAN ANTONIO WATER SYSTEM	
CONT.	BUDGET PROJ.
SUBMITTED	
APPROVED	
MAP NO. 170-672, 172-672, 172-674	SHEET
SECT. NO.	SAWS NO. 20-7003
DR. BS DS. MP	CK. JD
JOB NO. 12192-00	C3.07



LEGEND

PROP WATER MAIN	—————
EXIST PROPERTY LINE	- - - - -
EXIST CURB	=====
EXIST EASEMENT LINE	-----
EXISTING 16" WATER	— 16" WL —
EXISTING 8" SEWER	— SS 8" —
EXISTING 2" GAS	— 2" GAS —
EXISTING OVERHEAD UTILITIES	— OHU — OHU —
EXISTING WOOD FENCE	
EXISTING WIRE FENCE	— ◆ — ◆ —
PROPOSED PAVEMENT RESTORATION	▬
EXISTING 5' CONTOUR	- - - - -1179-
EXISTING 1' CONTOUR	- - - - -1180-
RESTRAINED LENGTH	RL

Marcus G. Cantu, P.E.



16" WATER MAIN (DI PIPE)

NOTES:

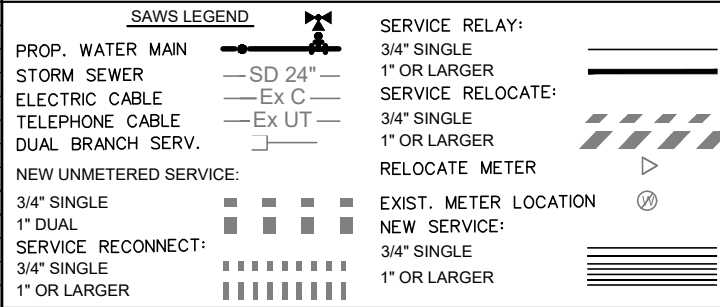
- CONTRACTOR SHALL BE RESPONSIBLE FOR RESTORING EXISTING FENCES, STREETS, DRIVEWAYS, CULVERTS, SIGNS, MAILBOXES, LANDSCAPING AND ABOVE OR BELOW GROUND STRUCTURES TO ITS ORIGINAL OR BETTER CONDITION AS A RESULT OF DAMAGES DONE BY THE PROJECT'S CONSTRUCTION.
- CONTRACTOR IS RESPONSIBLE FOR INSTALLING THRUST BLOCKING AND RESTRAINT SYSTEM AT TIE-INS, BENDS, VALVES, ETC. TO EXISTING MAINS.
- MEASUREMENTS SHOWN BETWEEN WATER MAIN AND PARALLEL UTILITIES ARE TAKEN FROM CENTER TO CENTER DIAMETER.
- CONTRACTOR TO REFER TO COSA TREE PROTECTION DETAILS, FOR ADDITIONAL INFORMATION.
- CONTRACTOR SHALL COORDINATE WITH CPS ENERGY AND PROVIDE BRACING AND/OR SPECIAL SHORING WHEN EXCAVATING IN THE VICINITY OF AN EXISTING POWER POLE.
- CONTRACTOR SHALL SUPPORT AND PROTECT ALL UTILITIES CROSSING AND/OR IN CLOSE PROXIMITY TO CONSTRUCTION OF PROPOSED WATER LINE. (NSPI)

CONTRACTOR SHALL BE RESPONSIBLE FOR LOCATING ALL UTILITIES WHETHER PUBLIC OR PRIVATE, PRIOR TO CONSTRUCTION

TRENCH EXCAVATION SAFETY PROTECTION

CONTRACTOR AND/OR CONTRACTOR'S INDEPENDENTLY RETAINED EMPLOYEE OR STRUCTURAL DESIGN/GEOTECHNICAL/ SAFETY/EQUIPMENT CONSULTANT, IF ANY, SHALL REVIEW THESE PLANS AND ANY AVAILABLE GEOTECHNICAL INFORMATION AND THE ANTICIPATED INSTALLATION SITES WITHIN THE PROJECT WORK AREA IN ORDER TO IMPLEMENT CONTRACTOR'S TRENCH EXCAVATION SAFETY PROTECTION SYSTEMS, PROGRAMS AND/OR PROCEDURES FOR THE PROJECT DESCRIBED IN THE CONTRACT DOCUMENTS. THE CONTRACTOR'S IMPLEMENTATION OF THESE SYSTEMS, PROGRAMS AND/OR PROCEDURES SHALL PROVIDE FOR ADEQUATE TRENCH EXCAVATION SAFETY PROTECTION THAT COMPLIES WITH, AT A MINIMUM, OSHA STANDARDS FOR TRENCH EXCAVATIONS. SPECIFICALLY, CONTRACTOR AND/OR CONTRACTOR'S INDEPENDENTLY RETAINED EMPLOYEE OR SAFETY CONSULTANT SHALL IMPLEMENT A TRENCH SAFETY PROGRAM IN ACCORDANCE WITH OSHA STANDARDS GOVERNING THE PRESENCE AND ACTIVITIES OF INDIVIDUALS WORKING IN AND AROUND TRENCH EXCAVATION.

ITEM NO.	DESCRIPTION	UNIT	QTY
103.1	REMOVE CONCRETE CURB	LF	5
205.2	HOT MIX ASPHALTIC PAVEMENT - TYPE B (10" PAVEMENT THICKNESS)	SY	5
205.4	HOT MIX ASPHALTIC PAVEMENT - TYPE D (2" PAVEMENT THICKNESS)	SY	5
500.1	CONCRETE CURB	LF	5
507.6	REMOVE AND REPLACE EXISTING WOODEN FENCE	LF	10
550.0	TRENCH EXCAVATION PROTECTION	LF	288
814.0	12-INCH D.I. PIPE (CLASS 350)	LF	12
814.0	16-INCH D.I. PIPE (CLASS 250)	LF	276
828.0	12" GATE VALVES, M.J.	EA	1
828.0	16" GATE VALVES, M.J.	EA	1
832.0	24" X 16" TAPPING SLEEVES & VALVES	EA	1
836.0	PIPE FITTINGS, ALL SIZES AND TYPES	TN	0.19
840.0	12" WATER TIE-IN	EA	1
840.0	24" WATER TIE-IN	EA	1
841.0	HYDROSTATIC TESTING	EA	1
844.0	2" TEMPORARY BLOW-OFF ASSEMBLY	EA	2
SC-4	BACKYARD LANDSCAPING REPAIR	LS	1
SC-5	CPS POLE BRACING/GUIDE WIRE RELOCATION	ALW	1
SS4/5-A	SUBSURFACE SENSITIVE FEATURE PROTECTION (CONCRETE (2,500 PSI))	CY	50
SS4/5-B	SUBSURFACE SENSITIVE FEATURE PROTECTION (STRUCTURAL)	LF	15



MENDEZ ENGINEERING
 Registration # F-14070
 12950 Country Parkway STE 120, San Antonio, Texas 78216
 Office: 210-802-0808 www.MendezEngineering.com

PAPE-DAWSON ENGINEERS
 SAN ANTONIO | AUSTIN | HOUSTON | FORT WORTH | DALLAS
 2000 HW LOOP 410 | SAN ANTONIO, TX 78213 | 210.375.9000
 TPLP FIRM REGISTRATION #470 | TPLS FIRM REGISTRATION #10028800

REVISION	NO.	REVISION	NO.	DATE

**OVERLOOK PARKWAY
WATER MAIN EXTENSION**

PLAN SHEET
STA 14+00 TO 16+75.18

DEVELOPER: SAN ANTONIO WATER SYSTEM

CONT. BUDGET PROJ.

SUBMITTED _____

APPROVED _____

MAP NO. XXX-XXX SHEET C3.11

Date: Aug 18, 2021, 3:46pm User ID: kcobler File: G:\Projects-2020\2014 - SAMS Overlook Parkway\02-1 General\2014 PLAN SHEETS_C03.dwg